



PROFESSIONAL LIFTING EQUIPMENT

# WHEN SAFETY DEPENDS ON PERFORMANCE!

**78230**

## 2,000 Lbs. Capacity 75:1 Gear-Driven Engine Stand

### INTENDED USE

*A twin-post design made for use with automobile, light-duty truck, and medium-duty truck engines and transmissions.*

### KEY DIFFERENCE

*The 78230 is a dramatically-improved version of the 78200. Its 75:1 gear box makes turning the heaviest engines effortless! All of the optional engine mounting adapters will work on either model.*



### FEATURES

- 75:1 ratio gearbox activated by hand crank easily turns the 360 degree rotating head to the desired work position.
- Two rigid rear wheels. One of the two front swivel casters has a lock for maximum stability and support.
- Polyurethane wheels provide protection for expensive tile and epoxy floors.
- Includes two universal mounting plates, rotating shaft, eight fully adjustable arms and all the related mounting hardware.
- Rotating shaft with mounting plate telescopes inside the post receiver for fine adjustment when mounting ends or sides of engines. Mounting plates can be adjusted 36-1/4" apart.

Model #	Capacity	Height	Width		Length		Weight
			Front	Rear	From	To	
<b>78230</b>	<b>2,000 lbs.</b>	42"	21.25"	40"	38.25"	53.25"	315 lbs.

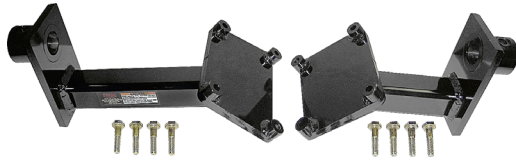


PROFESSIONAL LIFTING EQUIPMENT

# WHEN SAFETY DEPENDS ON PERFORMANCE!

## OPTIONAL ENGINE MOUNTING ADAPTERS

**78201**



Ford 6.0L & 6.4L

**78202**



Ford 6.2L

**78203A**



Ford 6.7L

**78208**



Dodge Cummins 6.7L



*Shown with  
10R140 Transmission*

