



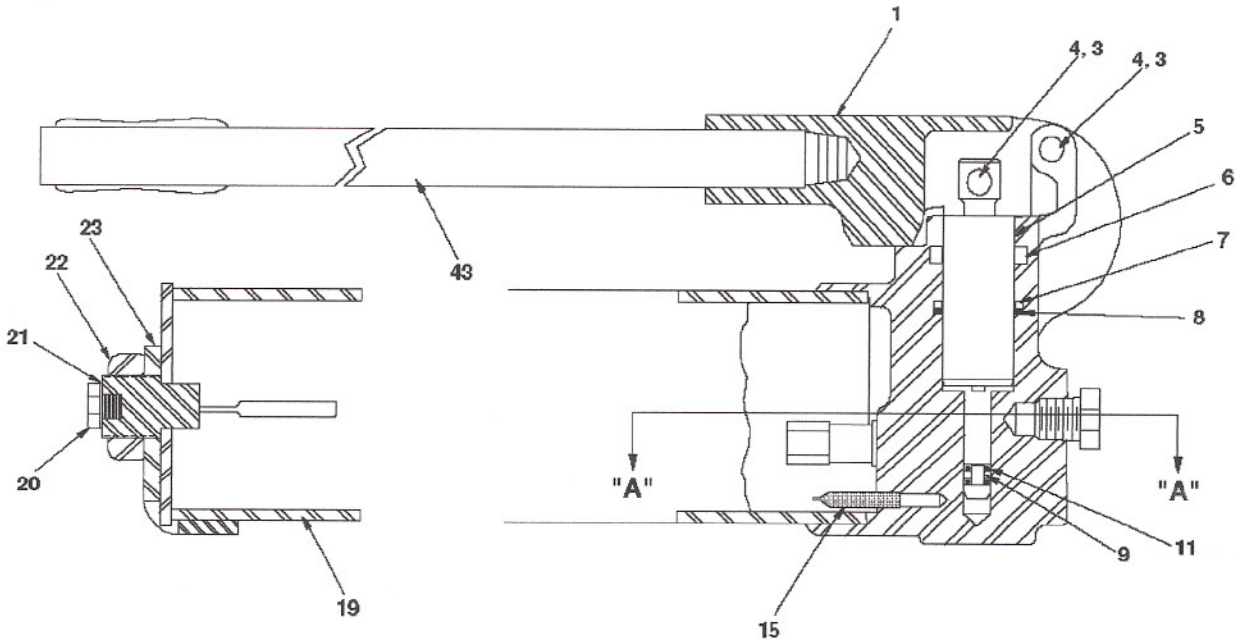
PROFESSIONAL LIFTING EQUIPMENT

Repair Parts Sheet

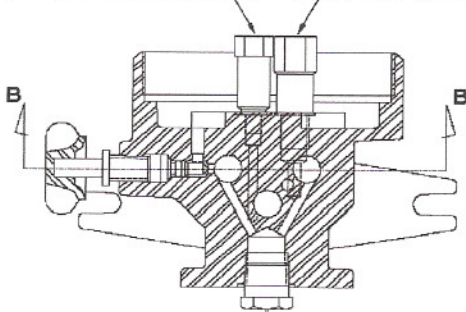
925013A Hand Pump

L-2156
Rev. B

Models With Date Codes Beginning With "O"



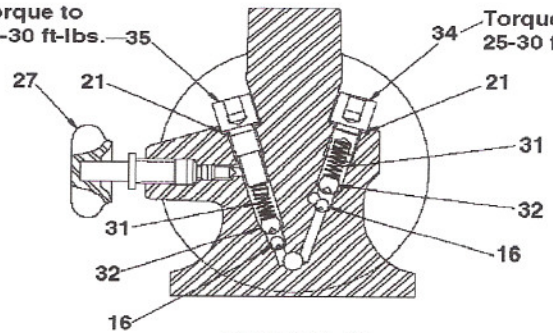
Set Relief Valve (item 10) to 10,000 psi - second stage
 Set Relief Valve (item 25) to 350 psi - first stage



Section A - A

Install O-Ring from release assembly to bottom of hole before threading in release valve assembly.

Torque to 25-30 ft-lbs.—35
 Torque to 25-30 ft-lbs.—34



Section B - B

INSTALL ALL KIT COMPONENTS TO ENSURE OPTIMUM PERFORMANCE OF THE PUMP.

REPAIR PARTS LIST

Item No.	Part Number	Qty.	Description
1	B113060-1	1	Beam
3	★	4	Retaining Ring
4	DC106061SR1	2	Beam Pin (Includes item 3)
5	CN464051SR2	1	Pump Plunger (Includes items 6,7,8, 9,11)
6	★	1	Wiper Ring
7	★	1	Back-Up Ring
8	★	1	O-Ring Packing
9	★	1	O-Ring
10	A8613900SR	1	Relief Valve (Includes item 38)
11	★	1	Back-Up Ring
15	★	1	Oil Strainer Screen
16	★	2	7/32" Ball
19	B245900SR	1	Reservoir Assembly
20	CL244950W	1	Filler Plug (Includes item 21)
21	★	4	Gasket
22	S4123	1	Jam Nut
23	B242267	1	Pump Rest
25	C960900SR	1	By-Pass Valve (Includes item 21)
27	B109900SR	1	Release Valve Spindle (Includes item 28, 29, 30)
28	H	1	Release Valve Packing Nut
29	★	1	Conical Spring Washer
30	★	3	Release Valve Packing
31	★	2	Spring
32	★	2	5/16" Ball
34	B249185SR	1	Valve Plug (Includes items 16, 21, 31, 32)
35	DA2526006SR	1	Valve Plug (Includes items 16, 21, 31, 32)
38	★	1	Gasket
43	C7900SR	1	Handle Assembly
61	★	1	O-Ring

★ Items included in and available only as part of Repair Kit 925013AK.