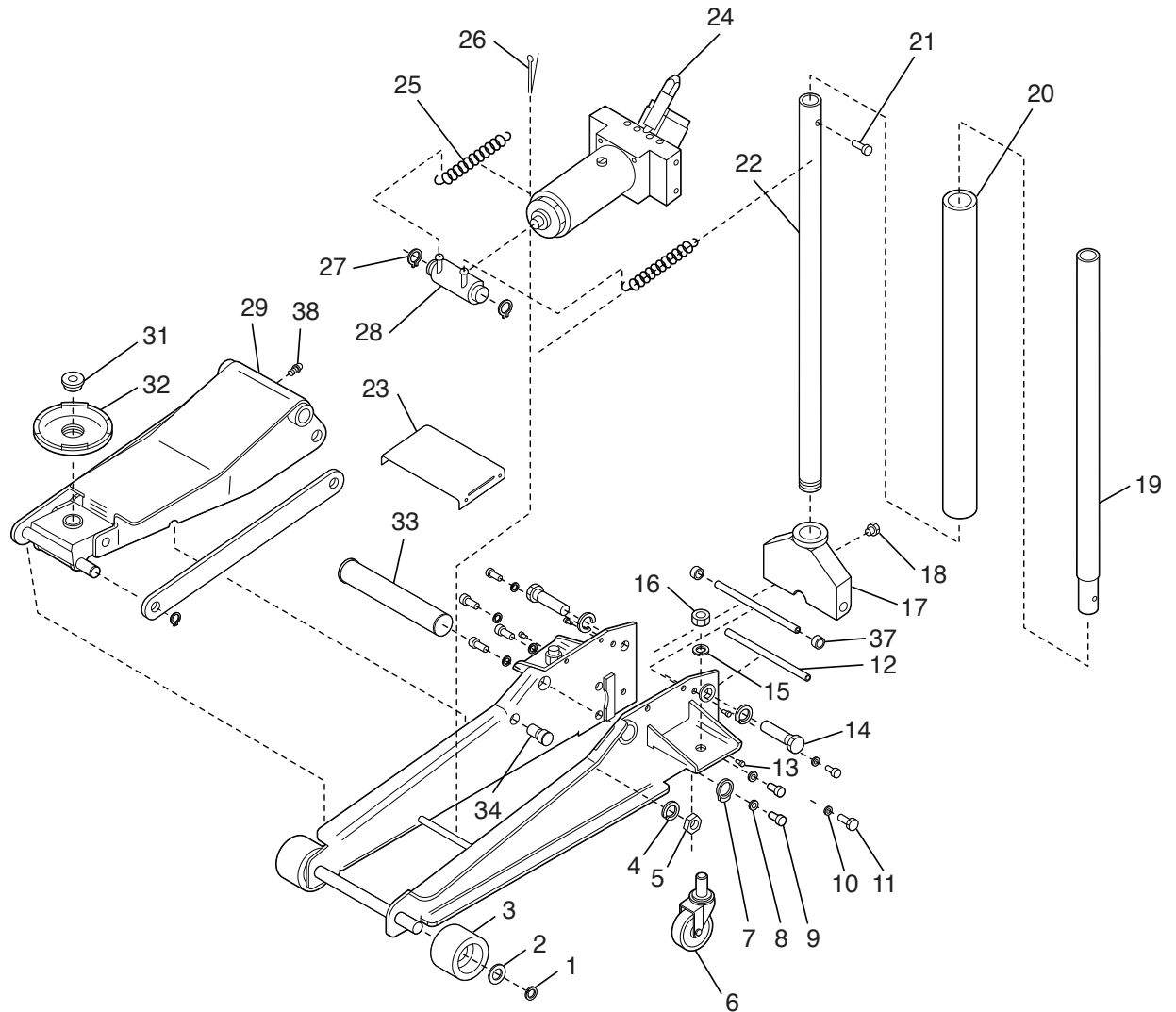


INDEX NO.	DESCRIPTION	PART NO.	REQ'D NO.
1	Retaining Ring, 18mm	214600	2
2	Flat Washer, 20 mm I.D.	214601	2
3	Wheel	214602	2
4	Lock Washer, 18mm	214604	4
5	Nut, 18mm	214605	2
6	Caster Assembly	214606	2
7	Snap Ring, 32mm	214607	2
8	Lock Washer, 10mm	214608	4
9	Allen Head Bolt, M10 x 20	214609	4
10	Lock Washer, 8mm	214610	4
11	Hex head Bolt, M8 x 20	214611	4
12	Pull Rod	214613	2
13	Screw	214614	4
14	Handle Socket Bolt	214615	2
15	Lock Washer, 16mm 214616	214616	2
16	Nut, M16	214617	2
17	Handle Socket	214618	1
18	Handle Lock Bolt	214619	1
19	Upper Handle	214620	1
20	Handle Bumper	214621	1
21	Hex Head Bolt, M8 x 25	214622	1
22	Lower Handle	214623	1
23	Inspection Plate	214624	1
24	Power Unit Assembly	214625	1
25	Spring	214626	2
26	Cotter Pin 4 x 50	214627	1
27	Retaining Ring, 23mm	214628	2
28	Block Linkage	214629	1
29	Lift Arm Assembly	214630	1
31	Saddle Screw	214632	1
32	Saddle	214633	1
33	Shaft Arm	214634	1
34	Bolt	214635	2
35	Long Linkage	214636	2
36	Retaining Ring, 20mm	214637	2
37	Rubber Washer	214612	2
38	Grease Fitting	45101384	1
	Seal Kit	214640	



2024

REPLACEMENT PARTS

MODEL NO.
71335

CAPACITY
3 1/2 TON

DESCRIPTION
FLOOR SERVICE JACK

